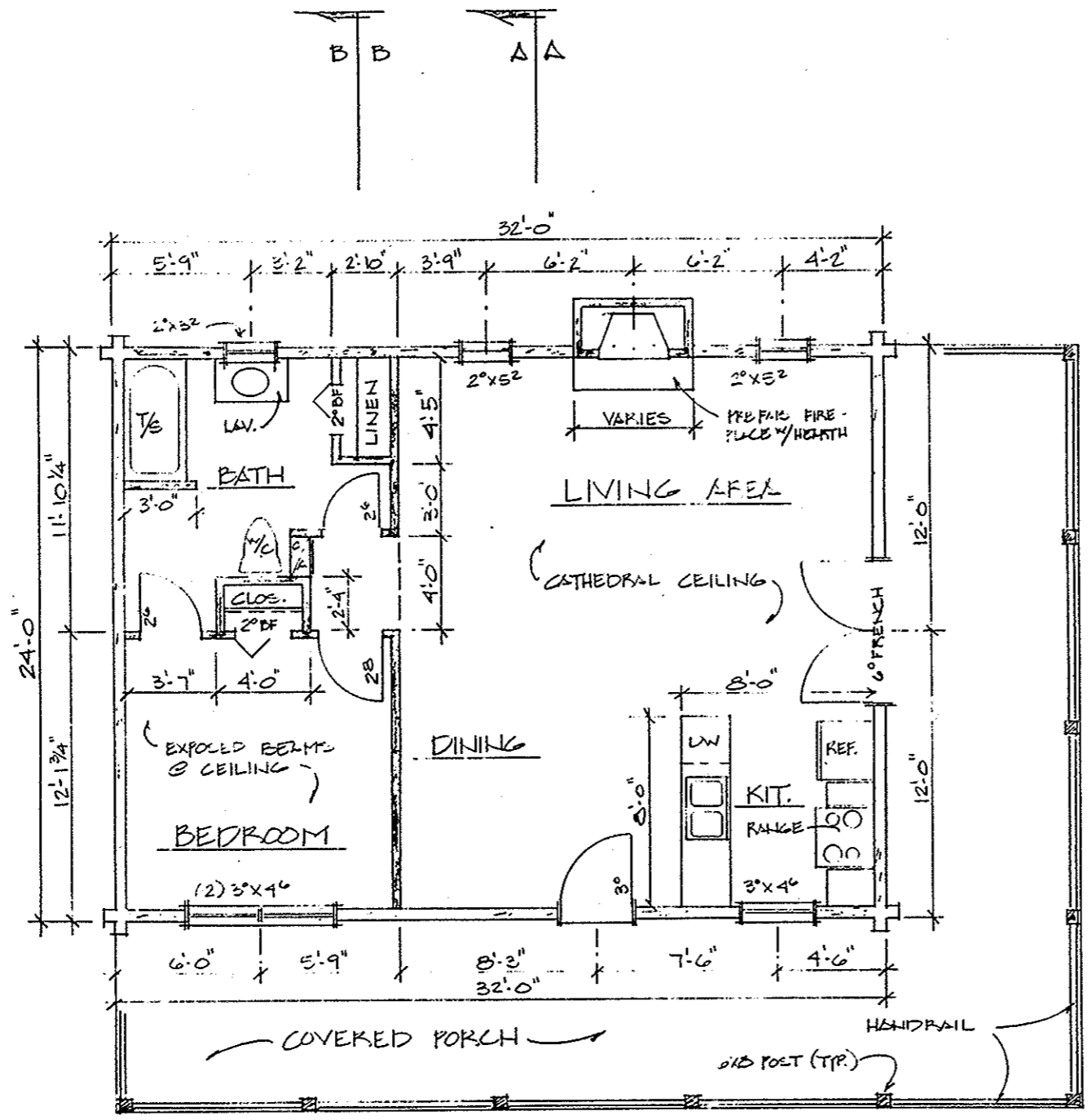
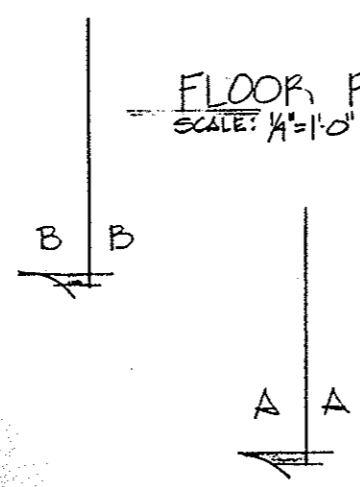


*FLOOR PLANS
PIONEER
DEER PATH VACATIONS*

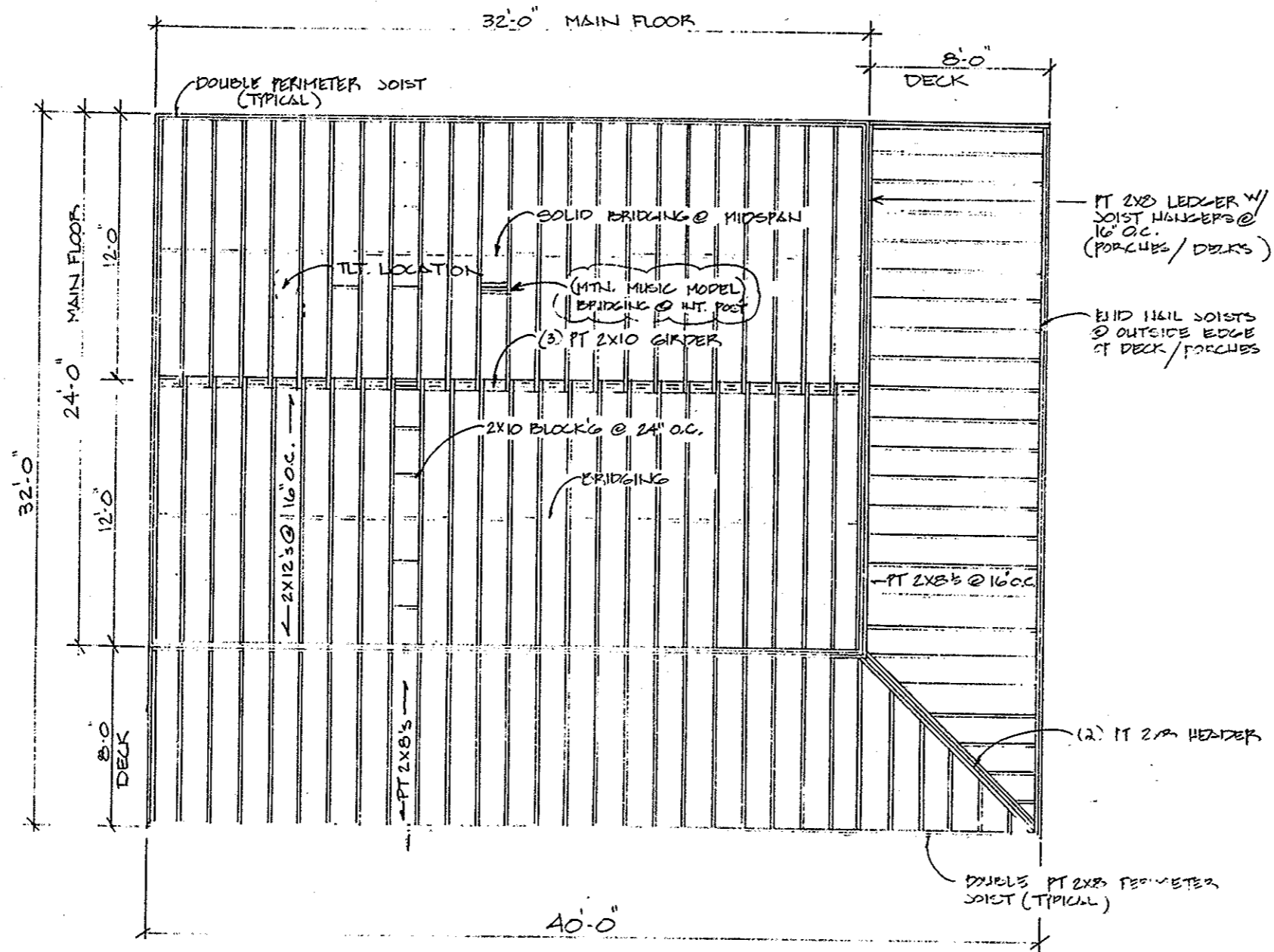


STEPS TO GRADE AS SITE ALLOWS

FLOOR PLAN
SCALE: 1/4" = 1'-0"

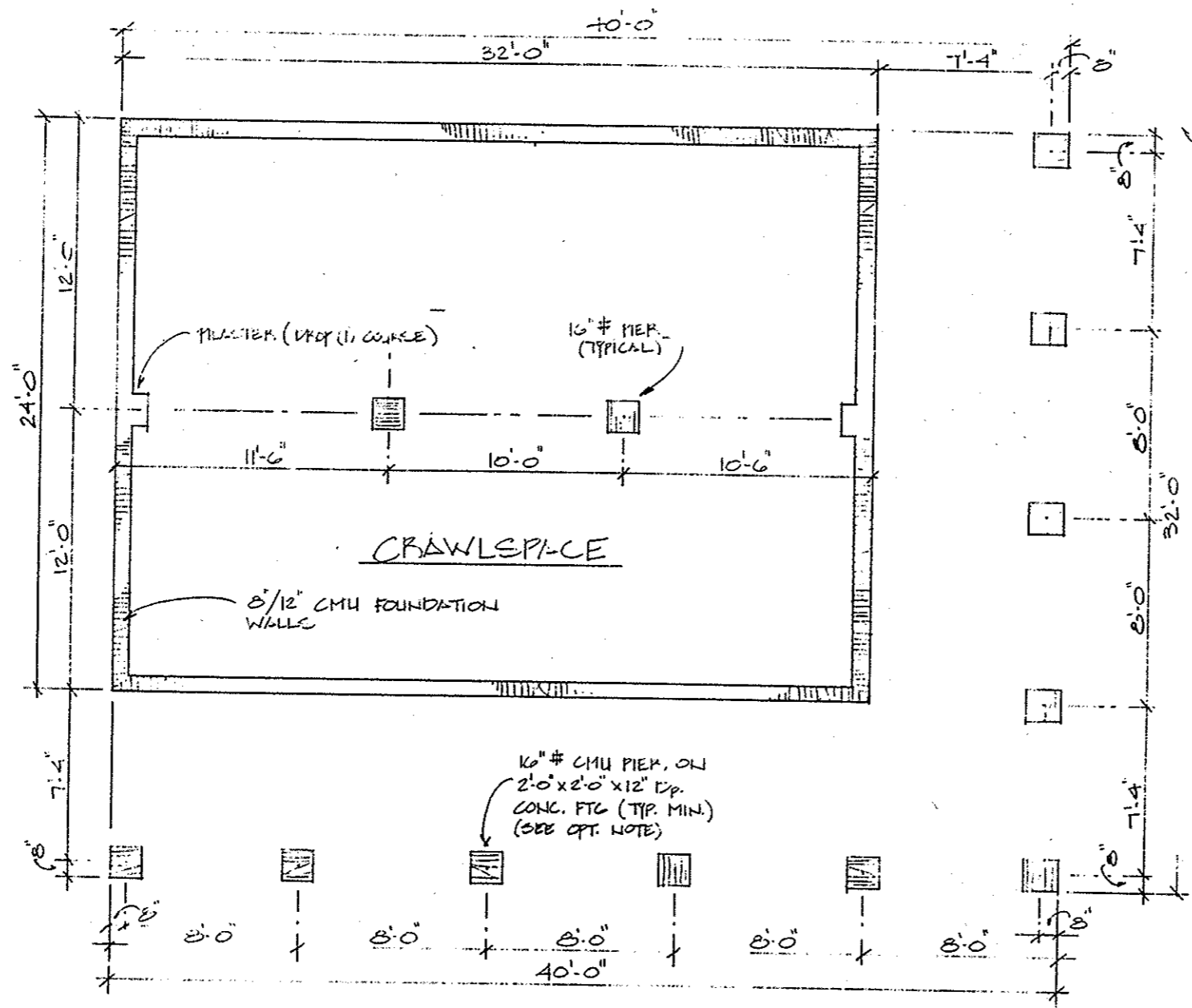


DEERPATH VILLAGES, L.P. 2788 WINDFALL ESTATES DRIVE		
SCALE: 1/4" = 1'-0"	APPROVED BY	DRAWN BY: JRS
DATE		REVISED
PIONEER MODEL (STD.)		
FLOOR PLAN		DRAWING NUMBER: 3 OF 4



SUBFLOOR FRAMING
SCALE: 1/4" = 1'-0"

DEER PATH VACATION'S, L.P. 2788 WINDFALL ESTATES DRIVE		
SCALE 1/4" = 1'-0"	APPROVED BY	DRAWN BY DSB
DATE		REVISED
PIONEER MODEL (STD.) 24'x32' - MOUNTAIN MUSIC MODEL (STD.) -		
SUBFLOOR FRAMING		DRAWING NUMBER 2 OF 4

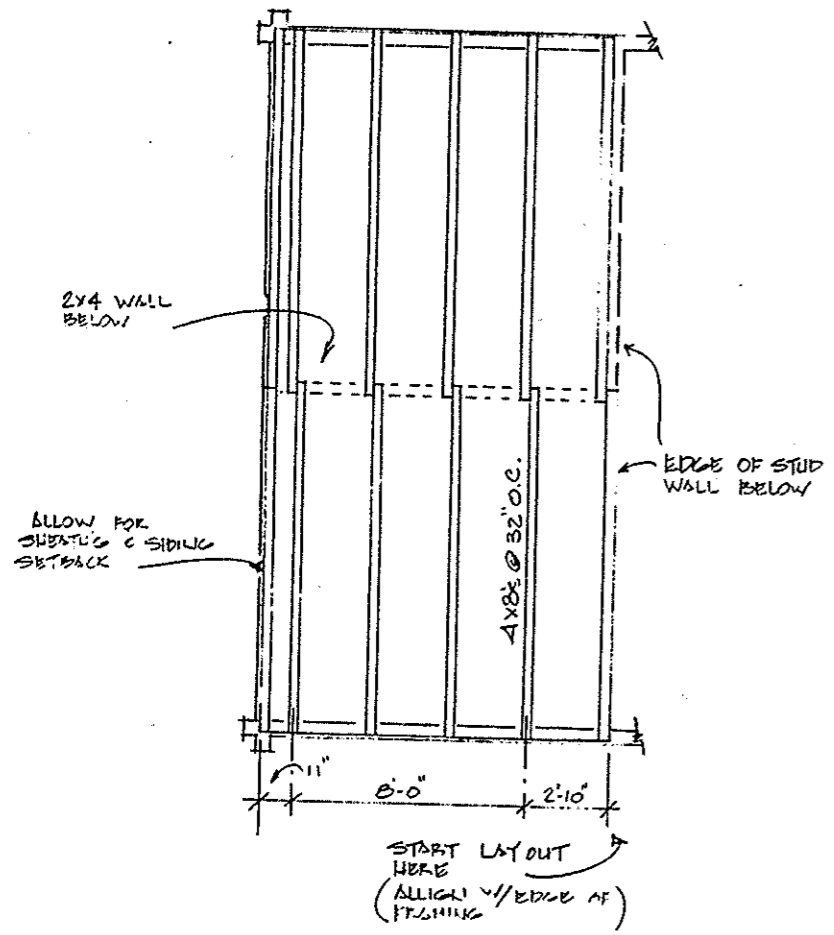


NOTE:
 LOCATE (2) 8" x 16" FOUNDATION
 VENTS & (1) ACCESS DOOR
 AS SITE PERMITS

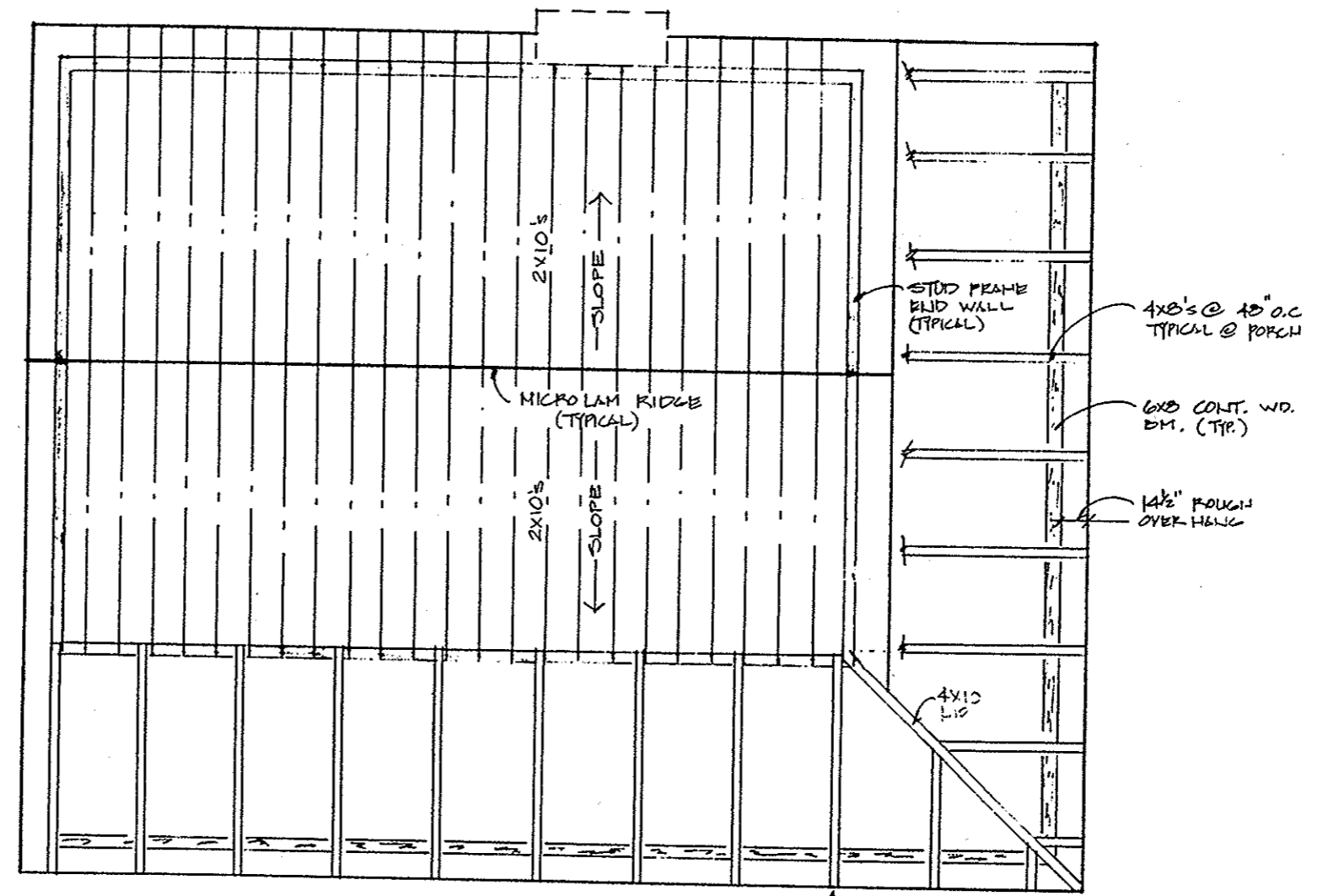
OPT. 12 NOTE:
 24" Ø CONC. PIERS IN PLACE
 OF CMU PIERS & FOOTINGS

NOTE:
 STEP FOUNDATION AS
 NEEDED

DEERPATH VACATIONS, L.P.			
2788 WINDFALL ESTATES DR., E			
SCALE	1/4" = 1'-0"	APPROVED BY	DJB
DATE		REVISION	
- PIONEER MODEL (STD.) 24' x 32' - MOUNTAIN MUSIC MODEL (STD.)			DRAWING NUMBER
FOUNDATION			1 OF 4



CEILING FRAMING
SCALE: 1/4"=1'-0"



ROOF FRAMING PLAN
SCALE: 1/4"=1'-0"

DEER PATH VACATIONS L.P.			
2188 WINDFALL ESTATES DRIVE			
SCALE	1/4"=1'-0"	APPROVED BY	DRAWN BY DJS
DATE			REVISION
PIONEER MODEL (STD.)			
FRAMING			4 OF 4