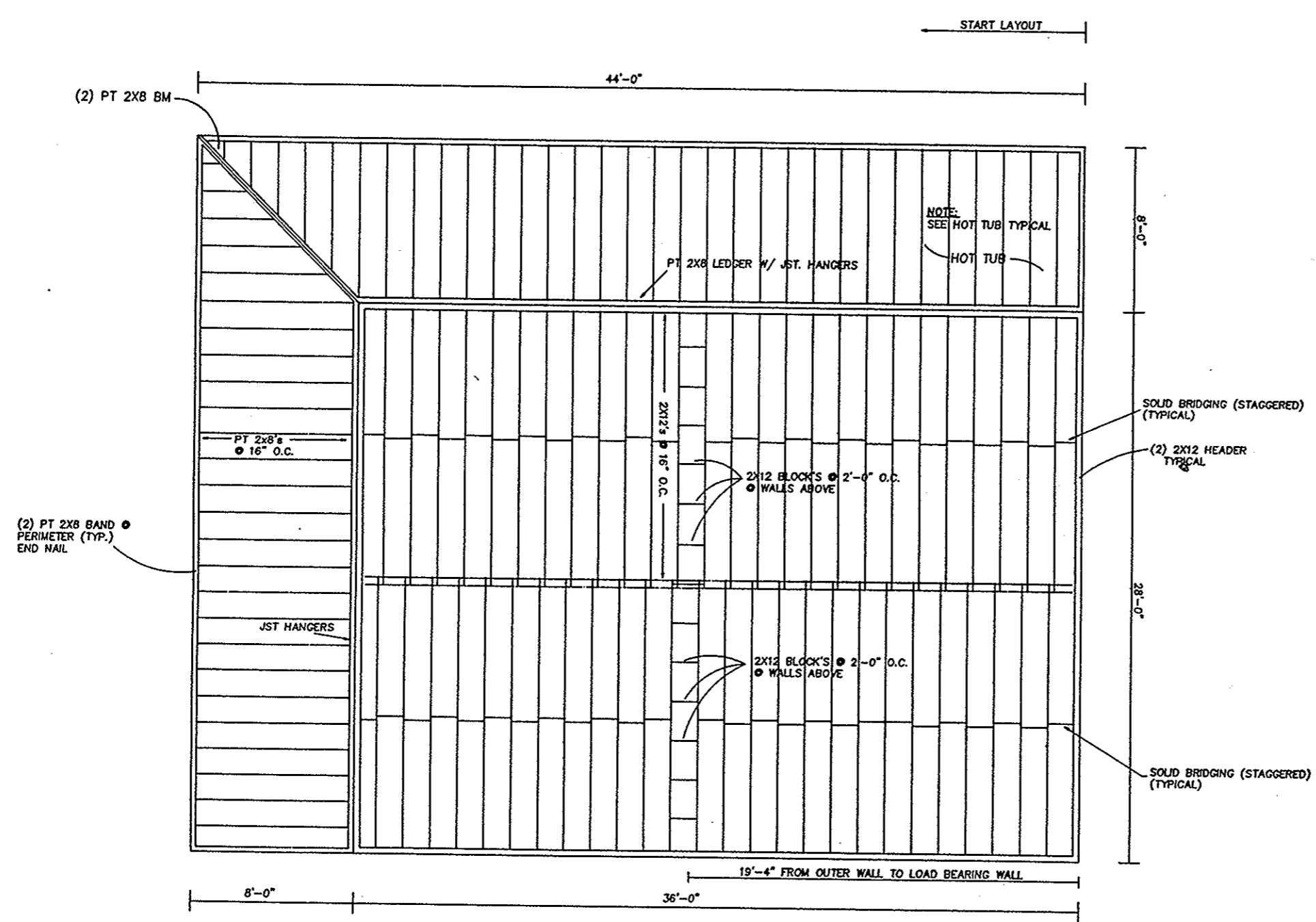


*FLOOR PLANS
SETTLER MODEL
DEER PATH VACATIONS*



START LAYOUT

(2) PT 2X8 BM

44'-0"

NOTE:
SEE HOT TUB TYPICAL

HOT TUB

PT 2X8 LEDGER W/ JST. HANGERS

8'-0"

SOLID BRIDGING (STAGGERED)
(TYPICAL)

(2) 2X12 HEADER
TYPICAL

PT 2x8's
@ 16" O.C.

2X12 @ 16" O.C.

2X12 BLOCKS @ 2'-0" O.C.
@ WALLS ABOVE

(2) PT 2X8 BAND @
PERIMETER (TYP.)
END NAIL

28'-0"

JST HANGERS

2X12 BLOCKS @ 2'-0" O.C.
@ WALLS ABOVE

SOLID BRIDGING (STAGGERED)
(TYPICAL)

19'-4" FROM OUTER WALL TO LOAD BEARING WALL

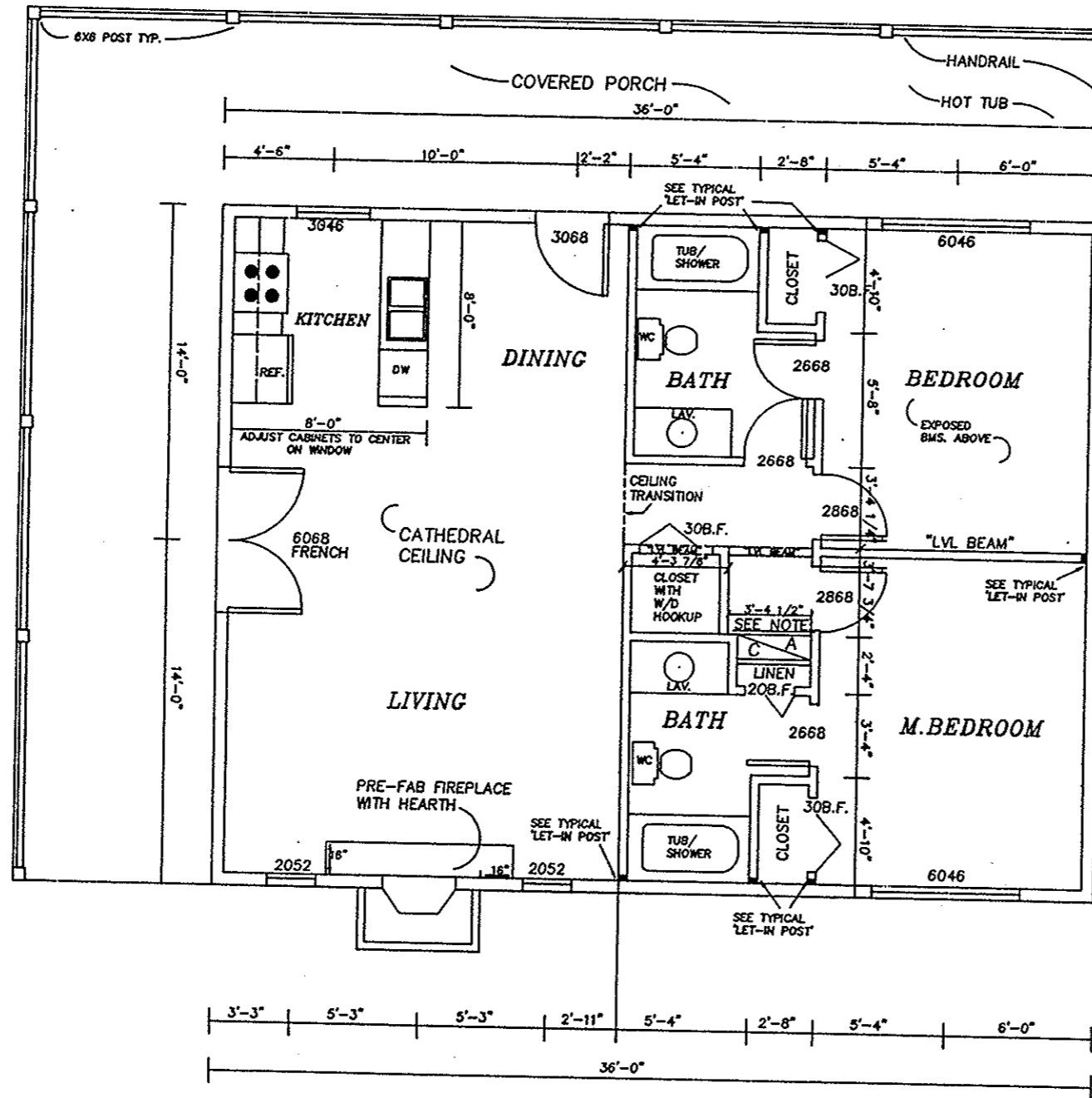
8'-0"

36'-0"

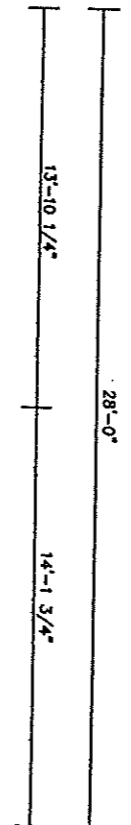
SCALE 1/4" = 1.0'

FLOOR FRAMING
DOUGLAS LAKE RESORT
SETTLER MODEL

NOTE:
INSIDE FRAME WALL SHOULD BE 2" HIGH
AND SHOW FRAMED IN ABOVE THE AC VENT.



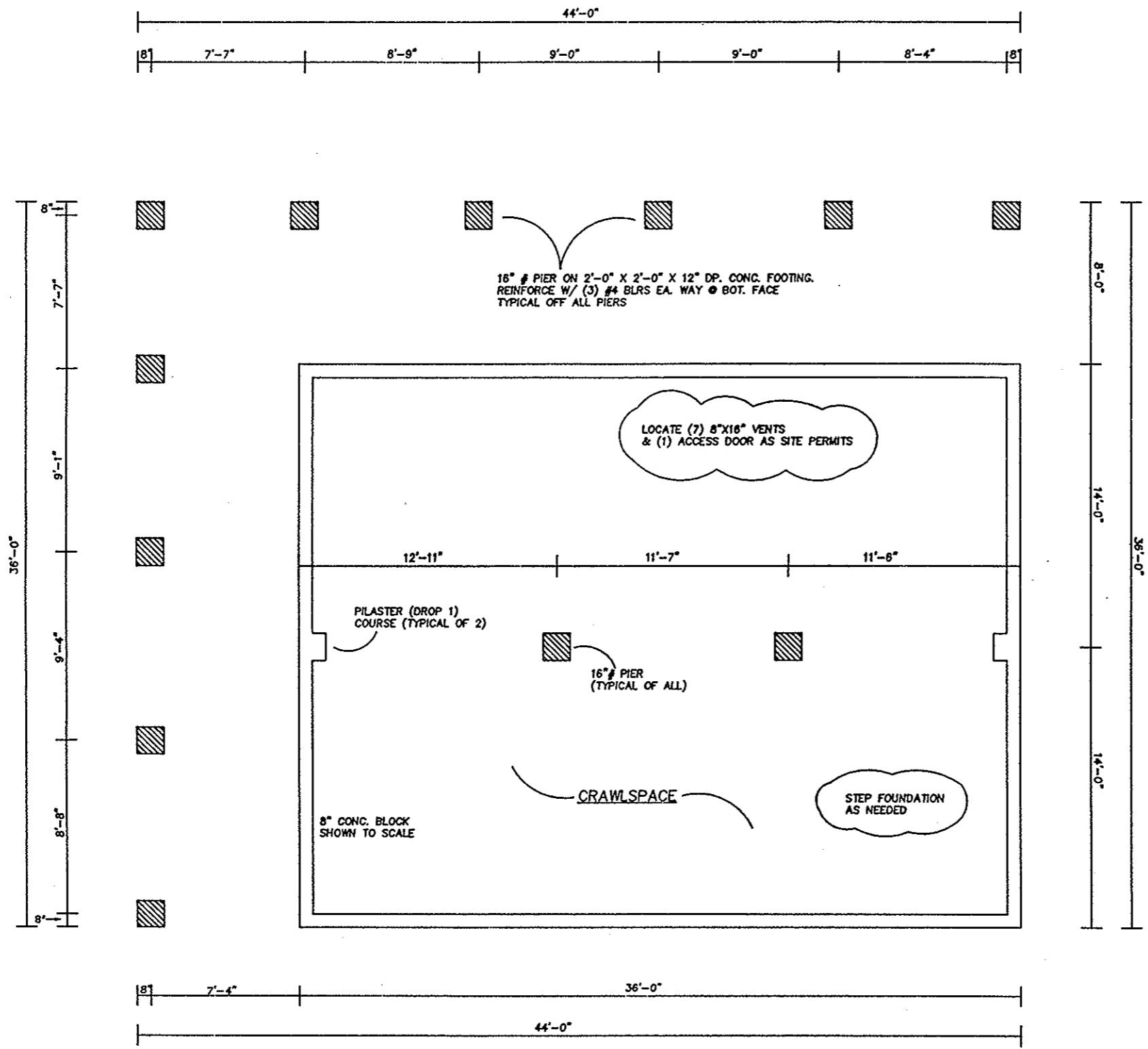
STEPS TO GRADE
AS SITE ALLOWS



OK David Peterson
Jung Page

SCALE 1/4" = 1.0'

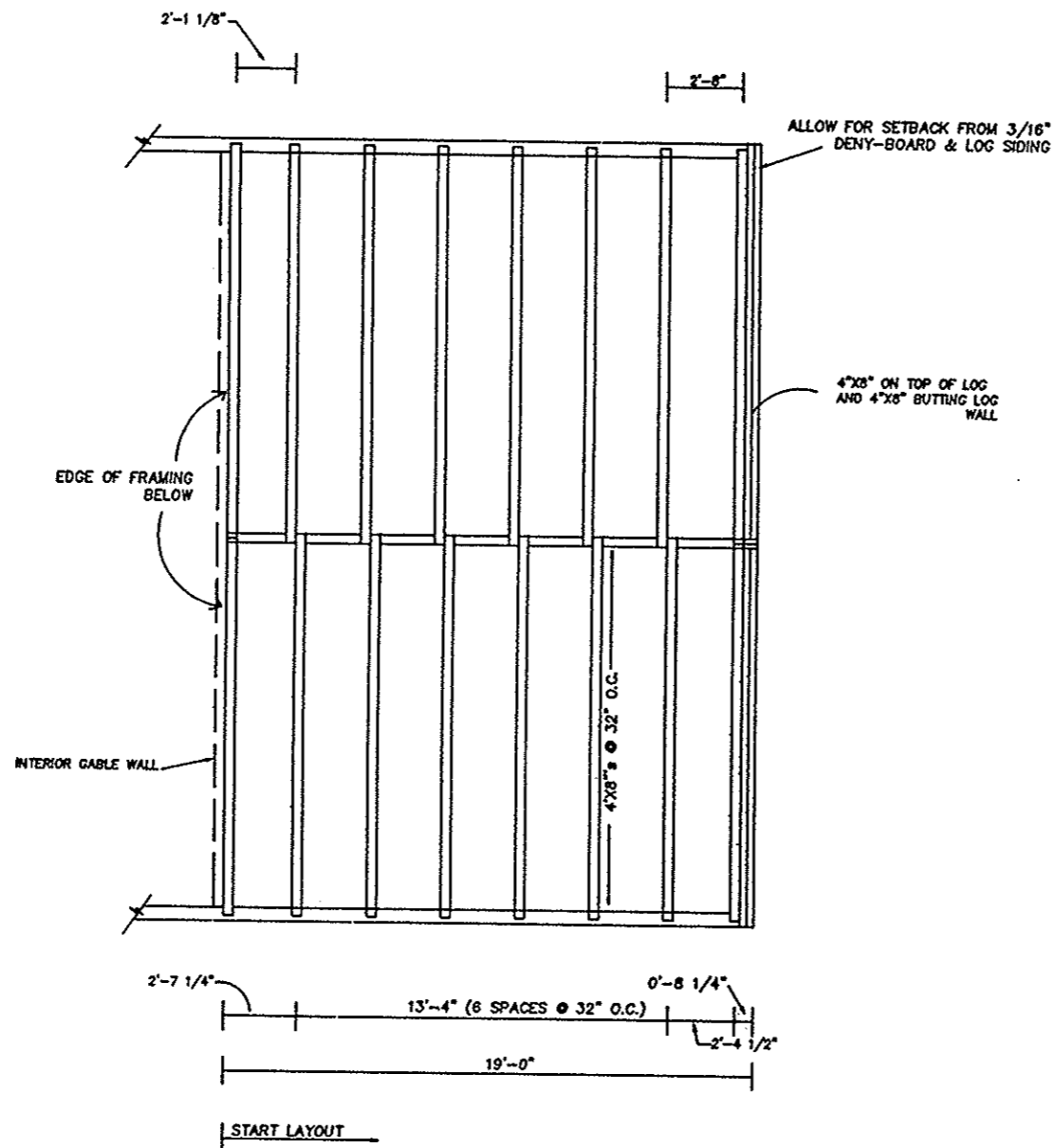
MAIN FLOOR PLAN
DOUGLAS LAKE RESORT
SETTLER MODEL



16# PIER ON 2'-0" X 2'-0" X 12" DP. CONC. FOOTING.
REINFORCE W/ (3) #4 BLRS EA. WAY @ BOT. FACE
TYPICAL OFF ALL PIERS

SCALE 1/4" = 1.0'

FOUNDATION PLAN
DOUGLAS LAKE RESORT
SETTLER MODEL



SCALE 1/4" = 1.0'

CEILING FRAMING
DOUGLAS LAKE RESORT
SETTLER MODEL